

AMERICANS WITH DISABILITIES ACT (ADA) TRANSITION PLAN FOR PUBLIC FACILITIES

North Vernon, Indiana



143 East Main Street
North Vernon, IN 47265

December 2022

TABLE OF CONTENTS

1. INTRODUCTION	2
2. TRANSITION PLAN DEVELOPMENT	3
A. ADA COORDINATOR	3
B. GRIEVANCE PROCEDURE	4
C. SELF-EVALUATION/COMMITMENT/SCHEDULE	5
D. ADA STANDARDS AND GUIDELINES	5
3. PUBLIC INVOLVEMENT	6
4. IMPLEMENTATION	6
APPENDICES	
APPENDIX A: COMPLAINT/GRIEVANCE FORM	7
APPENDIX B: BUILDING AND STRUCTURE REVIEW	9
APPENDIX C: SIDEWALK AND CURB RAMPS REVIEW	20

INTRODUCTION

The Americans with Disabilities Act (ADA) was enacted on July 26, 1990, and later amended effective January 1, 2009. As written and implemented, the ADA provides comprehensive civil rights protections to persons with disabilities in the areas of employment, state and local government services, access to public accommodations, transportation, and telecommunication. The ADA is a companion civil rights legislation to the Civil Rights Act of 1964 and Section 504 of the Rehabilitation Act of 1973. To be protected by the ADA, one must have a disability or have a relationship or association with an individual with a disability. An individual with a disability is defined by the ADA as a person who has a physical or mental impairment that substantially limits one or more major life activities, a person who has a history or record of such impairment, or a person who is perceived by others as having such impairment. The ADA, however, does not specifically name all the impairments that are covered. The ADA is divided into five sections covering the following topics:

Title I: Employment

Title II: Public Services (and Transportation)

Title III: Public Accommodations (and Commercial Facilities)

Title IV: Telecommunications

Title V: Miscellaneous Provisions

Title II specifically prohibits state and local governments from discriminating against persons with disabilities or from excluding participation in or denying benefits of programs, services, or activities to persons with disabilities. It is under this title that this transition plan has been prepared. This transition plan is intended to outline the methods by which physical changes should be made to give effect to the non-discrimination policies described in Title II.

TRANSITION PLAN DEVELOPMENT

To ensure program accessibility for people with disability in the community, the City of North Vernon has developed a Transition Plan, which is to be considered good practice.

This Transition Plan for Public Facilities considers the following:

A. ADA COORDINATOR:

Effective communication is essential to address all the complaints or concerns of all individuals. To keep the lines of communication open, and thereby ensure effective communication between all parties, the City of North Vernon has appointed the following person as the ADA Coordinator:

Shawn Gerkin
143 E Main Street
North Vernon, IN 47265
(812) 346-3789
sgerkin@northvernon-in.gov

The ADA Coordinator shall coordinate the North Vernon efforts to comply with and carry out its responsibilities under Title II of the ADA, including any investigation of any complaint communicated to the ADA coordinator. Such complaints may take the form of alleging noncompliance with ADA mandates or alleging any actions that would be prohibited under ADA. The City of North Vernon shall make available to all interested individuals the name, office address, and telephone number of the employee(s) so designated and shall adopt and publish procedures for the prompt and equitable resolution of complaints. Every complaint must be directed in writing to the ADA Coordinator.

B. GRIEVANCE PROCEDURE

The grievance procedure established below is intended to adhere to the standards outlined in the ADA. The procedure must be used by anyone who wishes to file a complaint alleging discrimination on the basis of disability in the provisions of services, activities, programs, or benefits provided by the City of North Vernon. The complaint should be in writing and contain information about the alleged discrimination such as name, address, phone number of the complainant and location, date, and description of the problem. An example grievance form can be found in Appendix A of this document. Alternative means of filing complaints, such as personal interviews or recordings of the complainant will be made available for persons with disabilities upon requests. The complaint should be submitted by the grievant and/or his/her designee as soon as possible but no later than 180 calendar days after the alleged violation to the ADA Coordinator at the address shown under 'A. ADA COORDINATOR' on page 3. Within 15 calendar days after receipt of the complaint, the ADA Coordinator or his/her designee will meet with the complainant to discuss the complaint and the possible resolutions. Within 15 calendar days of the meeting, the ADA Coordinator or his/her designee will respond in writing, and where appropriate, in a format accessible to the complainant, such as large print, Braille, or audio tape. The response will explain the position of the City of North Vernon and offer options for substantive resolution of the complaint. If the response by the ADA Coordinator or his/her designee does not satisfactorily resolve the issue, the complainant or his/her designee may appeal the decision within 15 calendar days after receipt of the response to the ADA Coordinator or his/her designee. Within 15 calendar days after receipt of the appeal, the ADA Coordinator or his/her designee will meet again with the complainant to discuss the appeal and possible resolutions. Within 15 calendar days after the meeting, the ADA Coordinator or his/her designee will respond in writing, and, where appropriate, in a format described above that is accessible to the complainant, with a final resolution of the complaint. All written complaints received by the ADA Coordinator or his/her designee, appeals to the ADA Coordinator or his/her designee, and responses from ADA office will be retained by the City of North Vernon for at least three years.

C. SELF-EVALUATION/COMMITMENT/SCHEDULE

HWC Engineering, acting as a representative of the City of North Vernon, has performed a cursory review of all city-owned properties and structures for ADA compliance. The results of this evaluation of all the city-owned properties and structures can be found in Appendix B. HWC Engineering, acting as representative of the City of North Vernon has also performed a review of all sidewalks and curb ramps for ADA compliance. The results of this evaluation will be found in Appendix C.

The city is committed to making sidewalks, curb ramps, public areas and city-owned facilities accessible to all pedestrians including those with disabilities. This will be accomplished through the following programs:

- All new construction, reconstruction, road construction or alterations, including federal projects under the control and/or inspection of the City of North Vernon will be in compliance with ADA.
- Buildings and municipal-owned structures will be brought into compliance as funds are available. Specific complaints will be prioritized.

D. ADA STANDARDS/GUIDELINES

The standards are intended to apply to all construction undertaken within the city right-of-way. For sidewalks within the city right-of-way, the “Proposed Accessibility Guidelines for Pedestrian Facilities in the Public Right-of-Way” (PROWAG) should be used. For buildings and facilities, the “ADA Accessibility Guidelines for Buildings and Facilities” (ADAAG) should be used. Other standards, if necessary, will be applied at the discretion of the ADA Coordinator.

PUBLIC INVOLVEMENT

The City of North Vernon instructed the City Engineering Firm to provide a self-evaluation of the public rights-of-way and facilities and an ADA Transition Plan. At that time, the city began openly discussing in public format the ADA Transition Plan. The City Council meets Second and Fourth Monday of every month at 6:00, The Plan was submitted on November 28th, meeting the consultant presented and discussed the draft ADA Transition Plan including self-evaluation. At that time, the draft document became public record and available for a two-week review and comment period. On December 12th, the consultant presented the final ADA Transition Plan including self-evaluation and the board approved it.

IMPLEMENTATION

The city approved the ADA Transition Plan in public forum at the City Council meeting on November 28th, 2022. Implementation of the plan began on that date. Not only does the city commit to following the guidelines set forth in this Transition Plan but it also commits to actively revising and amending this document as new information is discovered. Further, as a matter of policy, this document will be updated at least every three years. Finally, a copy of this document has been placed on file at the 143 E Main Street, North Vernon Indiana 47265, with the ADA coordinator.

APPENDIX A: COMPLAINT / GRIEVANCE FORM

Grievant Information:

Grievant Name:			
Address:	City:	State:	Zip Code:
Phone:	Email:		
Alternative Phone:			

Person Preparing Complaint Relationship to Grievant (if different from Grievant):

Grievant Name:			
Address:	City:	State:	Zip Code:
Phone:	Email:		
Alternative Phone:			

Please specify any location(s) related to the complaint or grievance (if applicable):

Please provide a complete description of the specific complaint or grievance:

APPENDIX B: BUILDING AND STRUCTURE REVIEW

BUILDING EVALUATION

The City of North Vernon through its ADA Coordinator and hired consultant, completed a cursory building and structure review. The following sections describe the City’s various buildings and ADA facilities.

ADA Requirements	
Item:	Requirement:
Parking Stall	96” Min. Width
Parking Aisle Width	96” Min. Width
Ramp	48” Min. Width
Ramp Handrails	34” – 38” Height
Ramp Slope	1:12 Max. Running Slope 1:48 Max. Cross Slope
Door Openings	32” Min. Width
Restroom Stall Door Opening	32’ Min. Width
Restroom Stall Dimensions	56” Deep x 60” Wide
Grab Bars	33” - 36” Height
Urinals	17” Max. Height
Toilet Seat	17” – 19” Min. Height
Counter / Sink	34” Max. Height
Towel Dispenser / Dryer	48” Max. Height, 20” Max. Reach Depth
Soap Dispenser	48” Max. Height, 20” Max. Reach Depth
Fountain Spout Outlet	36” Max. Height

FACILITIES EVALUATED

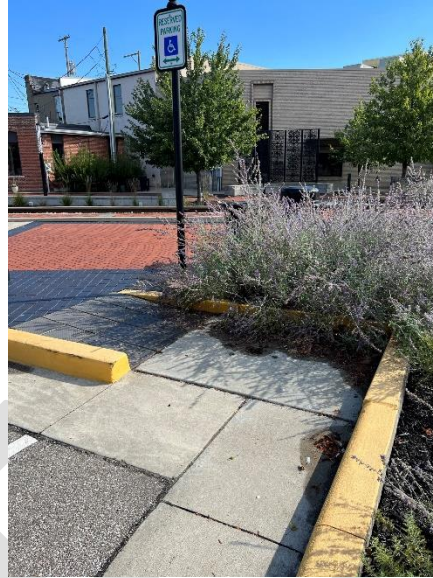
A. Stellar Building	11
B. City Hall	16
C. Police Station	21
D. City Pool	26
E. City Park	33
F. Education and Training Center	42
G. North Vernon Airport	52
H. St. Annes Golf Course	58
I. Tripton Park	63
J. North Vernon Mini Park	66

DRAFT

A. STELLAR BUILDING – 50 SHORT STREET, NORTH VERNON



Parking Lot



Parking Lot (2)



Front Door



Men's Restroom Door



Men's Restroom Stall



Men's Restroom Sink



Women's Restroom Door



Women's Restroom Stall



Women's Restroom Sink

Summary of Facility

For this study, parking stalls, general door opening widths and Restrooms were assessed and compared to the required ADA standards. Listed below, and highlighted in the tables below, are the items that do not meet the ADA requirements.

ADA Non-Compliant Issues

- Parking Lot, aisle width does not meet the ADA standards
- Building, ramp cross slope does not meet the ADA standards

Parking Lot		
Stall Width	Measured	103"
	ADA	96" MIN
Aisle Width	Measured	96"
	ADA	96" MIN
Curb Ramp Width	Measured	48"
	ADA	48" MIN
Curb Ramp Cross Slope	Measured	2%
	ADA	2% MAX
Curb Ramp Running Slope	Measured	5.30%
	ADA	8.33% MAX
Notes		

Building		
Ramp Running Slope	Measured	1.30%
	ADA	8.33% MAX
Ramp Cross Slope	Measured	4.20%
	ADA	2% MAX
Ramp Width	Measured	48"
	ADA	36" MIN
Ramp Handrails	Y/N	N/A
Handrail Height	Measured	N/A
	ADA	34" - 38"
Front Door	Measured	36"
	ADA	32" MIN
Fountain Spout Outlet Height	Measured	N/A
	ADA	36" MAX
Hallway Door Width	Measured	81.5"
	ADA	32" MIN
Notes		

Restrooms			
		Men	Women
Door Opening	Measured	35"	35"
	ADA	32" MIN	
Stall Door	Measured	N/A	N/A
	ADA	32" MIN	
Stall/Restroom Dimensions	Measured	89"X88"	86"X85"
	ADA	56" DEEP X 60" WIDE	
Grab Bars	Y/N	Y	Y
Grab Bar Height	Measured	36"	36"
	ADA	33" - 36"	
Urinals	Y/N	N/A	N/A
Urinal Height	Measured	N/A	N/A
	ADA	17" MAX	
Toilet Seat Height	Measured	17"	17"
	ADA	17" - 19" MIN	
Counter/Sink Height	Measured	34.5"	34.5"
	ADA	34" MAX	
Towel/Dryer	Measured	34.5"	34.5"
	ADA	48" MAX HEIGHT, 20" MAX DEPTH	
Soap	Measured	34.5"	34.5"
	ADA	48" MAX HEIGHT, 20" MAX DEPTH	
Notes			

B. CITY HALL – 143 E. MAIN STREET, NORTH VERNON



Parking Lot



Parking Lot (2)



Ramp to Entrance



Front Door



Hallway



Unisex Restroom Door



Unisex Restroom Stall



Unisex Restroom Sink

Summary of Facility

For this study, parking stalls, general door opening widths and Restrooms were assessed and compared to the required ADA standards. Listed below, and highlighted in the tables below, are the items that do not meet the ADA requirements.

ADA Non-Compliant Issues

- Parking Lot, aisle width does not meet the ADA standards
- Restroom, toilet seat height does not meet the ADA standards

Parking Lot		
Stall Width	Measured	147"
	ADA	96" MIN
Aisle Width	Measured	63"
	ADA	96" MIN
Curb Ramp Width	Measured	N/A
	ADA	48" MIN
Curb Ramp Cross Slope	Measured	N/A
	ADA	2% MAX
Curb Ramp Running Slope	Measured	N/A
	ADA	8.33% MAX
Notes		

Building		
Ramp Running Slope	Measured	7.30%
	ADA	8.33% MAX
Ramp Cross Slope	Measured	2.00%
	ADA	2% MAX
Ramp Width	Measured	72"
	ADA	36" MIN
Ramp Handrails	Y/N	Y
Handrail Height	Measured	37"
	ADA	34" - 38"
Front Door	Measured	36"
	ADA	32" MIN
Fountain Spout Outlet Height	Measured	N/A
	ADA	36" MAX
Hallway Door Width	Measured	47"
	ADA	32" MIN
Notes		

Restrooms		
		Men
Door Opening	Measured	36"
	ADA	32" MIN
Stall Door	Measured	N/A
	ADA	32" MIN
Stall/Restroom Dimensions	Measured	136"X72"
	ADA	56" DEEP X 60" WIDE
Grab Bars	Y/N	Y
Grab Bar Height	Measured	34.5"
	ADA	33" - 36"
Urinals	Y/N	N
Urinal Height	Measured	N/A
	ADA	17" MAX
Toilet Seat Height	Measured	16"
	ADA	17" - 19" MIN
Counter/Sink Height	Measured	34"
	ADA	34" MAX
Towel/Dryer	Measured	40.5"
	ADA	48" MAX HEIGHT, 20" MAX DEPTH
Soap	Measured	42"
	ADA	48" MAX HEIGHT, 20" MAX DEPTH
Notes		

C. POLICE STATION – 101 N. MADISON AVE, NORTH VERNON



Parking Lot



Parking Lot (2)



Parking Lot (3)



Parking Lot (4)



Ramp to Front Door



Front Door



Unisex Restroom Door



Unisex Restroom Stall



Unisex Restroom Sink

Summary of Facility

For this study, parking stalls, general door opening widths and Restrooms were assessed and compared to the required ADA standards. Listed below, and highlighted in the tables below, are the items that do not meet the ADA requirements.

ADA Non-Compliant Issues

- All measurements are ADA compliant

Parking Lot		
Stall Width	Measured	100"
	ADA	96" MIN
Aisle Width	Measured	110"
	ADA	96" MIN
Curb Ramp Width	Measured	82"
	ADA	48" MIN
Curb Ramp Cross Slope	Measured	2%
	ADA	2% MAX
Curb Ramp Running Slope	Measured	7.30%
	ADA	8.33% MAX
Notes		

Building		
Ramp Running Slope	Measured	1.10%
	ADA	8.33% MAX
Ramp Cross Slope	Measured	1.70%
	ADA	2% MAX
Ramp Width	Measured	70.5"
	ADA	36" MIN
Ramp Handrails	Y/N	N
Handrail Height	Measured	N/A
	ADA	34" - 38"
Front Door	Measured	36"
	ADA	32" MIN
Fountain Spout Outlet Height	Measured	N/A
	ADA	36" MAX
Hallway Door Width	Measured	N/A
	ADA	32" MIN
Notes		

Restrooms		
		Unisex
Door Opening	Measured	36"
	ADA	32" MIN
Stall Door	Measured	N/A
	ADA	32" MIN
Stall/Restroom Dimensions	Measured	92"X59"
	ADA	56" DEEP X 60" WIDE
Grab Bars	Y/N	Y
Grab Bar Height	Measured	34"
	ADA	33" - 36"
Urinals	Y/N	N
Urinal Height	Measured	N/A
	ADA	17" MAX
Toilet Seat Height	Measured	17"
	ADA	17" - 19" MIN
Counter/Sink Height	Measured	30.5"
	ADA	34" MAX
Towel/Dryer	Measured	33"
	ADA	48" MAX HEIGHT, 20" MAX DEPTH
Soap	Measured	41.5"
	ADA	48" MAX HEIGHT, 20" MAX DEPTH
Notes		

D. CITY POOL – 604 N. STATE STREET, NORTH VERNON



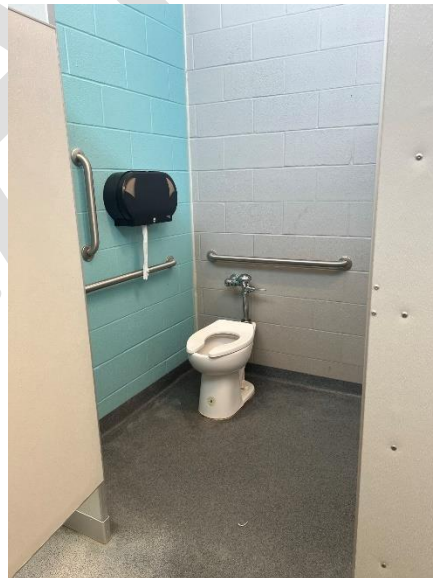
Parking Lot



Parking Lot (2)



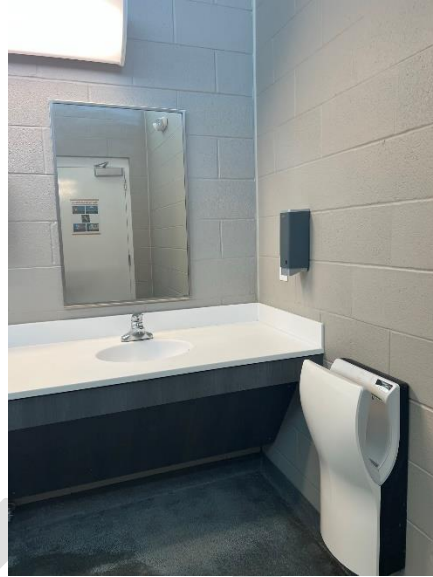
Men's Restroom Door



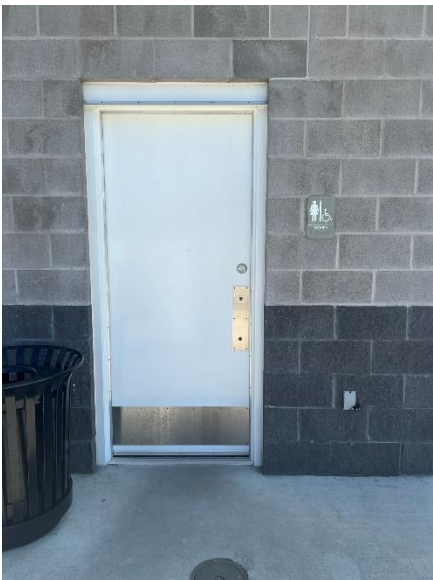
Men's Restroom Stall



Men's Restroom Urinal



Men's Restroom Sink



Women's Restroom Door



Women's Restroom Stall



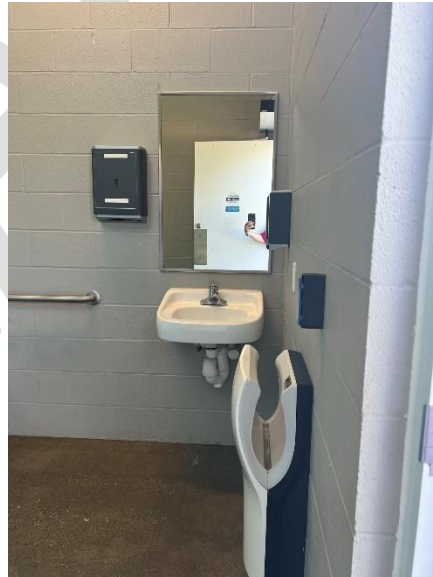
Women's Restroom Sink



Outside Unisex Restroom Door (1)



Outside Unisex Restroom Stall (1)



Outside Unisex Restroom Sink (1)



Outside Unisex Restroom Door (2)



Outside Unisex Restroom Stall (1)



Outside Unisex Restroom Sink (1)

Summary of Facility

For this study, parking stalls, general door opening widths and Restrooms were assessed and compared to the required ADA standards. Listed below, and highlighted in the tables below, are the items that do not meet the ADA requirements.

ADA Non-Compliant Issues

- All measurements are ADA compliant

Parking Lot		
Stall Width	Measured	106"
	ADA	96" MIN
Aisle Width	Measured	91"
	ADA	96" MIN
Curb Ramp Width	Measured	70"
	ADA	48" MIN
Curb Ramp Cross Slope	Measured	1.20%
	ADA	2% MAX
Curb Ramp Running Slope	Measured	1.60%
	ADA	8.33% MAX
Notes		

Building		
Ramp Running Slope	Measured	N/A
	ADA	8.33% MAX
Ramp Cross Slope	Measured	N/A
	ADA	2% MAX
Ramp Width	Measured	N/A
	ADA	36" MIN
Ramp Handrails	Y/N	N/A
Handrail Height	Measured	N/A
	ADA	34" - 38"
Front Door	Measured	N/A
	ADA	32" MIN
Fountain Spout Outlet Height	Measured	N/A
	ADA	36" MAX
Hallway Door Width	Measured	N/A
	ADA	32" MIN
Notes		

Restrooms					
		Inside		Outside	
		Men	Women	Unisex	Unisex
Door Opening	Measured	36"	36"	36.5"	36.5"
	ADA	32" MIN		32" MIN	
Stall Door	Measured	36"	36"	N/A	N/A
	ADA	32" MIN		32" MIN	
Stall/Restroom Dimensions	Measured	60"X62"	60"X62"	113"X86"	113"X86"
	ADA	56" DEEP X 60" WIDE		56" DEEP X 60" WIDE	
Grab Bars	Y/N	Y	Y	Y	Y
Grab Bar Height	Measured	34"	34"	34"	34"
	ADA	33" - 36"		33" - 36"	
Urinals	Y/N	Y	N/A	N	N/A
Urinal Height	Measured	15"	N/A	N/A	N/A
	ADA	17" MAX		17" MAX	
Toilet Seat Height	Measured	17"	17"	17	17
	ADA	17" - 19" MIN		17" - 19" MIN	
Counter/Sink Height	Measured	34"	34"	33	33
	ADA	34" MAX		34" MAX	
Towel/Dryer	Measured	34"	34"	36	36
	ADA	48" MAX HEIGHT, 20" MAX DEPTH		48" MAX HEIGHT, 20" MAX DEPTH	
Soap	Measured	35"	35"	48	48
	ADA	48" MAX HEIGHT, 20" MAX DEPTH		48" MAX HEIGHT, 20" MAX DEPTH	
Notes					

E. CITY PARK –604 N STATE STEET, NORTH VERNON



Parking Lot



Parking Lot (2)



Men's Restroom Door (1)



Men's Restroom Stall Door (1)



Men's Restroom Stall (1)



Men's Restroom Urinal (1)



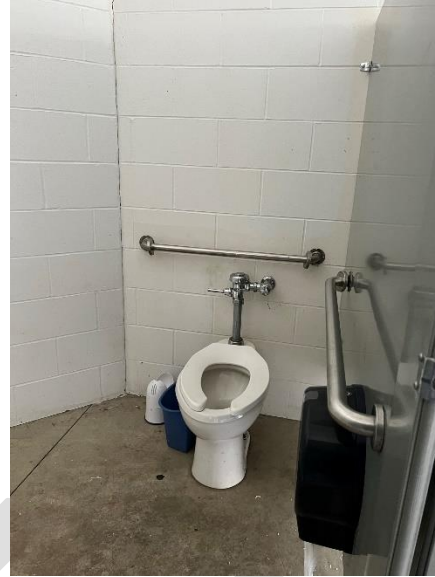
Men's Restroom Sink (1)



Women's Restroom Door (1)



Women's Restroom Stall Door (1)



Women's Restroom Stall (1)



Women's Restroom Sink (1)



Men's Restroom Door (2)



Men's Restroom Stall (2)



Men's Restroom Urinal (2)



Men's Restroom Sink (2)



Women's Restroom Door (2)



Women's Restroom Stall (2)



Women's Restroom Sink (2)



Men's Restroom Door (3)



Men's Restroom Stall (3)



Men's Restroom Urinal (3)



Men's Restroom Sink (3)



Women's Restroom Door (3)



Women's Restroom Stall (3)



Women's Restroom Sink (3)

Summary of Facility

For this study, parking stalls, general door opening widths and Restrooms were assessed and compared to the required ADA standards. Listed below, and highlighted in the tables below, are the items that do not meet the ADA requirements.

ADA Non-Compliant Issues

- Restroom 2-Men and Women's stall/restroom dimensions do not meet ADA requirements
- Restroom 2, Women's towel/dryer does not meet ADA requirements
- Restroom 3, Women's stall/restroom dimensions does not meet ADA standards
- Restroom 3, Men's urinal height does not meet ADA standards

Parking Lot		
Stall Width	Measured	119"
	ADA	96" MIN
Aisle Width	Measured	118"
	ADA	96" MIN
Curb Ramp Width	Measured	N/A
	ADA	48" MIN
Curb Ramp Cross Slope	Measured	N/A
	ADA	2% MAX
Curb Ramp Running Slope	Measured	N/A
	ADA	8.33% MAX
Notes		

Building		
Ramp Running Slope	Measured	N/A
	ADA	8.33% MAX
Ramp Cross Slope	Measured	N/A
	ADA	2% MAX
Ramp Width	Measured	N/A
	ADA	36" MIN
Ramp Handrails	Y/N	N/A
Handrail Height	Measured	N/A
	ADA	34" - 38"
Front Door	Measured	N/A
	ADA	32" MIN
Fountain Spout Outlet Height	Measured	N/A
	ADA	36" MAX
Hallway Door Width	Measured	N/A
	ADA	32" MIN
Notes		

Restrooms							
		1		2		3	
		Men	Women	Men	Women	Men	Women
Door Opening	Measured	35"	35"	36"	36"	36"	36"
	ADA	32" MIN		32" MIN		32" MIN	
Stall Door	Measured	34"	34"	N/A	38"	N/A	N/A
	ADA	32" MIN		32" MIN		32" MIN	
Stall/Restroom Dimensions	Measured	96"X92"	95"X88"	43"X54"	42"X40"	119"x134"	36"X39"
	ADA	56" DEEP X 60" WIDE		56" DEEP X 60" WIDE		56" DEEP X 60" WIDE	
Grab Bars	Y/N	Y	Y	N	N	Y	Y
Grab Bar Height	Measured	34"	34"	N/A	N/A	34"	34"
	ADA	33" - 36"		33" - 36"		33" - 36"	
Urinals	Y/N	Y	N/A	Y	N/A	Y	N/A
Urinal Height	Measured	17"	N/A	17"	N/A	18"	N/A
	ADA	17" MAX		17" MAX		17" MAX	
Toilet Seat Height	Measured	18"	17"	34"	34"	17"	17"
	ADA	17" - 19" MIN		17" - 19" MIN		17" - 19" MIN	
Counter/Sink Height	Measured	34"	34"	40"	42"	36"	36"
	ADA	34" MAX		34" MAX		34" MAX	
Towel/Dryer	Measured	40"	40"	51"	N/A	46"	40"
	ADA	48" MAX HEIGHT, 20" MAX DEPTH		48" MAX HEIGHT, 20" MAX DEPTH		48" MAX HEIGHT, 20" MAX DEPTH	
Soap	Measured	42"	42"			50"	47"
	ADA	48" MAX HEIGHT, 20" MAX DEPTH		48" MAX HEIGHT, 20" MAX DEPTH		48" MAX HEIGHT, 20" MAX DEPTH	
Notes							

**F. EDUCATION AND TRAINING CENTER –1200 W COUNTY ROAD 150 N,
NORTH VERNON**



Parking Lot



Parking Lot (2)



Front Entrance



Front Door



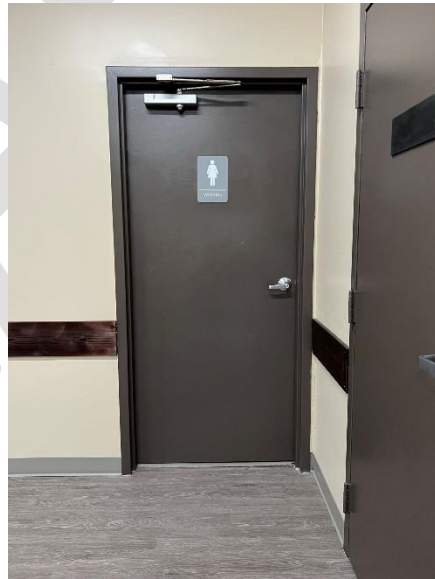
Men's Restroom Door (Front)



Men's Restroom Stall (Front)



Men's Restroom Sink (Front)



Women's Restroom Door (Front)



Women's Restroom Stall (Front)



Women's Restroom Sink (Front)



Hallway (200 Hall)



Men's Restroom Door (200 Hall)



Men's Restroom Stall (200 Hall)



Men's Restroom Sink (200 Hall)



Women's Restroom Door (200 Hall)



Women's Restroom Stall (200 Hall)



Women's Restroom Sink (200 Hall)



Men's Restroom Door (Ivy Tech)



Men's Restroom Stall (Ivy Tech)



Men's Restroom Urinal (Ivy Tech)



Men's Restroom Sink (Ivy Tech)



Women's Restroom Door (Ivy Tech)



Women's Restroom Stall (Ivy Tech)



Women's Restroom Sink (Ivy Tech)



Hallway (100 Hall)



Men's Restroom Door (100 Hall)



Men's Restroom Stall/Sink (100 Hall)



Women's Restroom Door (100 Hall)



Women's Restroom Stall/Sink (100 Hall)

Summary of Facility

For this study, parking stalls, general door opening widths and Restrooms were assessed and compared to the required ADA standards. Listed below, and highlighted in the tables below, are the items that do not meet the ADA requirements.

ADA Non-Compliant Issues

- Restroom (Front), no grab bars
- Restroom (Front, 100, 200 and Ivy Tech Halls), towel/dryer and soap exceed ADA standards.

Parking Lot		
Stall Width	Measured	118"
	ADA	96" MIN
Aisle Width	Measured	362"
	ADA	96" MIN
Curb Ramp Width	Measured	N/A
	ADA	48" MIN
Curb Ramp Cross Slope	Measured	N/A
	ADA	2% MAX
Curb Ramp Running Slope	Measured	N/A
	ADA	8.33% MAX
Notes		

Building		
Ramp Running Slope	Measured	N/A
	ADA	8.33% MAX
Ramp Cross Slope	Measured	N/A
	ADA	2% MAX
Ramp Width	Measured	N/A
	ADA	36" MIN
Ramp Handrails	Y/N	N/A
Handrail Height	Measured	N/A
	ADA	34" - 38"
Front Door	Measured	47"
	ADA	32" MIN
Fountain Spout Outlet Height	Measured	N/A
	ADA	36" MAX
Hallway Door Width	Measured	78"
	ADA	32" MIN
Notes		

Restrooms									
		Front		200 Hall		Ivy Tech Hall		100 Hall	
		Men	Women	Men	Women	Men	Women	Men	Women
Door Opening	Measured	36"	36"	36"	36"	36"	36"	36"	36"
	ADA	32" MIN		32" MIN		32" MIN		32" MIN	
Stall Door	Measured	N/A	N/A	N/A	N/A	36"	36.5"	N/A	N/A
	ADA	32" MIN		32" MIN		32" MIN		32" MIN	
Stall/Restroom Dimensions	Measured	78"x74"	95"x77"	111"x58"	121"x58"	61"x60"	61"x60"	111"x58"	121"x58"
	ADA	56" DEEP X 60" WIDE		56" DEEP X 60" WIDE		56" DEEP X 60" WIDE		56" DEEP X 60" WIDE	
Grab Bars	Y/N	N	N	Y	Y	Y	Y	Y	Y
Grab Bar Height	Measured	N/A	N/A	34"	34"	34"	34"	34"	34"
	ADA	33" - 36"		33" - 36"		33" - 36"		33" - 36"	
Urinals	Y/N	N	N	N	N/A	N	N/A	N	N/A
Urinal Height	Measured	N/A	N/A	N/A	N/A	N/A	N/A	N/A	N/A
	ADA	17" MAX		17" MAX		17" MAX		17" MAX	
Toilet Seat Height	Measured	17"	17"	16"	17"	17"	17"	16"	17"
	ADA	17" - 19" MIN		17" - 19" MIN		17" - 19" MIN		17" - 19" MIN	
Counter/Sink Height	Measured	30"	30"	31"	31"	31"	31"	31"	31"
	ADA	34" MAX		34" MAX		34" MAX		34" MAX	
Towel/Dryer	Measured	52.5"	52.5"	52"	52"	52"	52"	52"	52"
	ADA	48" MAX HEIGHT, 20" MAX DEPTH		48" MAX HEIGHT, 20" MAX DEPTH		48" MAX HEIGHT, 20" MAX DEPTH		48" MAX HEIGHT, 20" MAX DEPTH	
Soap	Measured	50"	50"	50"	50"	50"	50"	50"	50"
	ADA	48" MAX HEIGHT, 20" MAX DEPTH		48" MAX HEIGHT, 20" MAX DEPTH		48" MAX HEIGHT, 20" MAX DEPTH		48" MAX HEIGHT, 20" MAX DEPTH	
Notes									

G. NORTH VERNON ARIPORT –645 E COUNTY RD 450 N, NORTH VERNON



Parking Lot



Parking Lot (2)



Front Entrance



Front Door



Parking Lot



Parking Lot (2)



Front Entrance



Front Door



Parking Lot



Parking Lot (2)



Front Entrance



Front Door

Summary of Facility

For this study, parking stalls, general door opening widths and Restrooms were assessed and compared to the required ADA standards. Listed below, and highlighted in the tables below, are the items that do not meet the ADA requirements.

ADA Non-Compliant Issues

- Parking Lot, aisle width does not meet the ADA standards
- Restrooms Men and Women's, counter/sink height and towel/dryer exceed the ADA standards

Parking Lot		
Stall Width	Measured	130"
	ADA	96" MIN
Aisle Width	Measured	63"
	ADA	96" MIN
Curb Ramp Width	Measured	N/A
	ADA	48" MIN
Curb Ramp Cross Slope	Measured	N/A
	ADA	2% MAX
Curb Ramp Running Slope	Measured	N/A
	ADA	8.33% MAX
Notes		

Building		
Ramp Running Slope	Measured	N/A
	ADA	8.33% MAX
Ramp Cross Slope	Measured	N/A
	ADA	2% MAX
Ramp Width	Measured	N/A
	ADA	36" MIN
Ramp Handrails	Y/N	N/A
Handrail Height	Measured	N/A
	ADA	34" - 38"
Front Door	Measured	35.5"
	ADA	32" MIN
Fountain Spout Outlet Height	Measured	N/A
	ADA	36" MAX
Hallway Door Width	Measured	N/A
	ADA	32" MIN
Notes		

Restrooms			
		Men	Women
Door Opening	Measured	36"	36"
	ADA	32" MIN	
Stall Door	Measured	35"	35"
	ADA	32" MIN	
Stall/Restroom Dimensions	Measured	58"X78"	61"X60"
	ADA	56" DEEP X 60" WIDE	
Grab Bars	Y/N	Y	Y
Grab Bar Height	Measured	34"	34"
	ADA	33" - 36"	
Urinals	Y/N	Y	N/A
Urinal Height	Measured	16"	N/A
	ADA	17" MAX	
Toilet Seat Height	Measured	17"	17"
	ADA	17" - 19" MIN	
Counter/Sink Height	Measured	39"	39"
	ADA	34" MAX	
Towel/Dryer	Measured	49"	51"
	ADA	48" MAX HEIGHT, 20" MAX DEPTH	
Soap	Measured	45"	45"
	ADA	48" MAX HEIGHT, 20" MAX DEPTH	
Notes			

H. ST. ANNES GOLF COUSE –360 E COUNTY RD 350 N, NORTH VERNON



Parking Lot



Men's Restroom Door



Men's Restroom Stall



Men's Restroom Urinal



Men's Restroom Sink



Women's Restroom Door



Women's Restroom Stall



Women's Restroom Sink

Summary of Facility

For this study, parking stalls, general door opening widths and Restrooms were assessed and compared to the required ADA standards. Listed below, and highlighted in the tables below, are the items that do not meet the ADA requirements.

ADA Non-Compliant Issues

- Restrooms, no grab bars
- Restrooms Men and Women's, towel/dryer exceeds ADA standards

Parking Lot		
	Measured	119"
Stall Width	ADA	96" MIN
	Measured	125"
Aisle Width	ADA	96" MIN
	Measured	N/A
Curb Ramp Width	ADA	48" MIN
	Measured	N/A
Curb Ramp Cross Slope	ADA	2% MAX
	Measured	N/A
Curb Ramp Running Slope	ADA	8.33% MAX
Notes		

Building		
Ramp Running Slope	Measured	N/A
	ADA	8.33% MAX
Ramp Cross Slope	Measured	N/A
	ADA	2% MAX
Ramp Width	Measured	N/A
	ADA	36" MIN
Ramp Handrails	Y/N	N/A
Handrail Height	Measured	N/A
	ADA	34" - 38"
Front Door	Measured	36"
	ADA	32" MIN
Fountain Spout Outlet Height	Measured	N/A
	ADA	36" MAX
Hallway Door Width	Measured	N/A
	ADA	32" MIN
Notes		

Restrooms			
		Men	Women
Door Opening	Measured	36.5"	36.5"
	ADA	32" MIN	
Stall Door	Measured	36.5"	36.5"
	ADA	32" MIN	
Stall/Restroom Dimensions	Measured	124"X60"	102"X60"
	ADA	56" DEEP X 60" WIDE	
Grab Bars	Y/N	N	N
Grab Bar Height	Measured	N/A	N/A
	ADA	33" - 36"	
Urinals	Y/N	Y	N/A
Urinal Height	Measured	17"	N/A
	ADA	17" MAX	
Toilet Seat Height	Measured	17"	17.5"
	ADA	17" - 19" MIN	
Counter/Sink Height	Measured	36"	36"
	ADA	34" MAX	
Towel/Dryer	Measured	54"	52"
	ADA	48" MAX HEIGHT, 20" MAX DEPTH	
Soap	Measured	36"	36"
	ADA	48" MAX HEIGHT, 20" MAX DEPTH	
Notes			

I. TRIPTON PARK –S MADISON AVE., NORTH VERNON



Parking Lot



Parking Lot (2)

Summary of Facility

For this study, parking stalls, general door opening widths and Restrooms were assessed and compared to the required ADA standards. Listed below, and highlighted in the tables below, are the items that do not meet the ADA requirements.

ADA Non-Compliant Issues

- All measurements within ADA standards

Parking Lot		
Stall Width	Measured	102"
	ADA	96" MIN
Aisle Width	Measured	108"
	ADA	96" MIN
Curb Ramp Width	Measured	N/A
	ADA	48" MIN
Curb Ramp Cross Slope	Measured	N/A
	ADA	2% MAX
Curb Ramp Running Slope	Measured	N/A
	ADA	8.33% MAX
Notes		

Building		
Ramp Running Slope	Measured	N/A
	ADA	8.33% MAX
Ramp Cross Slope	Measured	N/A
	ADA	2% MAX
Ramp Width	Measured	N/A
	ADA	36" MIN
Ramp Handrails	Y/N	N/A
Handrail Height	Measured	N/A
	ADA	34" - 38"
Front Door	Measured	N/A
	ADA	32" MIN
Fountain Spout Outlet Height	Measured	N/A
	ADA	36" MAX
Hallway Door Width	Measured	N/A
	ADA	32" MIN
Notes		Building not open

Restrooms			
		Men	Women
Door Opening	Measured	N/A	N/A
	ADA	32" MIN	
Stall Door	Measured	N/A	N/A
	ADA	32" MIN	
Stall/Restroom Dimensions	Measured	N/A	N/A
	ADA	56" DEEP X 60" WIDE	
Grab Bars	Y/N	N/A	N/A
Grab Bar Height	Measured	N/A	N/A
	ADA	33" - 36"	
Urinals	Y/N		N/A
Urinal Height	Measured	N/A	N/A
	ADA	17" MAX	
Toilet Seat Height	Measured	N/A	N/A
	ADA	17" - 19" MIN	
Counter/Sink Height	Measured	N/A	N/A
	ADA	34" MAX	
Towel/Dryer	Measured	N/A	N/A
	ADA	48" MAX HEIGHT, 20" MAX DEPTH	
Soap	Measured	N/A	N/A
	ADA	48" MAX HEIGHT, 20" MAX DEPTH	
Notes		No Restrooms	

J. MINI PARK –GUM STREET, NORTH VERNON



Parking Lot

Summary of Facility

For this study, parking stalls, general door opening widths and Restrooms were assessed and compared to the required ADA standards. Listed below, and highlighted in the tables below, are the items that do not meet the ADA requirements.

ADA Non-Compliant Issues

- All measurements within ADA standards

Parking Lot		
Stall Width	Measured	100"
	ADA	96" MIN
Aisle Width	Measured	98"
	ADA	96" MIN
Curb Ramp Width	Measured	N/A
	ADA	48" MIN
Curb Ramp Cross Slope	Measured	N/A
	ADA	2% MAX
Curb Ramp Running Slope	Measured	N/A
	ADA	8.33% MAX
Notes		

Building		
Ramp Running Slope	Measured	N/A
	ADA	8.33% MAX
Ramp Cross Slope	Measured	N/A
	ADA	2% MAX
Ramp Width	Measured	N/A
	ADA	36" MIN
Ramp Handrails	Y/N	N/A
Handrail Height	Measured	N/A
	ADA	34" - 38"
Front Door	Measured	N/A
	ADA	32" MIN
Fountain Spout Outlet Height	Measured	N/A
	ADA	36" MAX
Hallway Door Width	Measured	N/A
	ADA	32" MIN
Notes		No Building

Restrooms			
		Men	Women
Door Opening	Measured	N/A	N/A
	ADA	32" MIN	
Stall Door	Measured	N/A	N/A
	ADA	32" MIN	
Stall/Restroom Dimensions	Measured	N/A	N/A
	ADA	56" DEEP X 60" WIDE	
Grab Bars	Y/N	N/A	N/A
Grab Bar Height	Measured	N/A	N/A
	ADA	33" - 36"	
Urinals	Y/N	N/A	N/A
Urinal Height	Measured	N/A	N/A
	ADA	17" MAX	
Toilet Seat Height	Measured	N/A	N/A
	ADA	17" - 19" MIN	
Counter/Sink Height	Measured	N/A	N/A
	ADA	34" MAX	
Towel/Dryer	Measured	N/A	N/A
	ADA	48" MAX HEIGHT, 20" MAX DEPTH	
Soap	Measured	N/A	N/A
	ADA	48" MAX HEIGHT, 20" MAX DEPTH	
Notes		No Restrooms	

APPENDIX C: SIDEWALK AND CURB RAMP REVIEW

The City/County/Town of ??, through its ADA Coordinator and hired consultant, completed a sidewalk and curb ramp review. The sidewalk and curb ramp locations are sorted by alphabetical order.

The following describes the City/County/Town's evaluation.

Sidewalks will be evaluated as follows:

- No Sidewalk
- Compliant
- Non-compliant, spot repairs needed (NC-Spot) (i.e., obstructions/defects that can be spot repaired)
- Non-compliant, full segment needs replaced (NC-Full) (non-compliant cross slope, running slope, condition, width, etc.)

Curb ramps will be evaluated as follows:

- Compliant
- Non-compliant but navigable (NC-Nav) (i.e., missing detectable warnings, non-compliant slopes, etc., but can be used by a wheelchair)
- Non-compliant, non-navigable (NC-Non-Nav) (sidewalk present)
- No curb ramp (no sidewalk present)

SIDEWALK EVALUATION

STREET NAME	FROM	TO	LEFT SIDEWALK	RIGHT SIDEWALK
10th St.	Amvets Dr	Buckeye St.	No Sidewalk	No Sidewalk
11th St.	Amvets Dr	Buckeye St.	No Sidewalk	No Sidewalk
1st St.	Hoosier St.	O & M Ave.	No Sidewalk	No Sidewalk
2nd St.	Hoosier St.	O & M Ave.	Compliant	Compliant
2nd St.	Madison St.	Washington St.	Compliant	Compliant
3rd St.	Hoosier St.	O & M Ave.	No Sidewalk	No Sidewalk
4th St.	County Rd. 350	Montrow Pkwy	No Sidewalk	No Sidewalk
4th St.	Ertel Ln.	JFK Dr.	No Sidewalk	No Sidewalk
4th St.	German St.	City Limits	Compliant	No Sidewalk
4th St.	Hoosier St.	Summit St.	NC-Spot	NC-Spot
4th St.	Montrow Pkwy	US Hwy 50	No Sidewalk	No Sidewalk
4th St.	O & M Ave.	Hoosier St.	NC-Spot	NC-Spot
4th St.	Summit St.	German St.	Compliant	No Sidewalk
4th St.	US Hwy 50	Ertel Ln.	No Sidewalk	No Sidewalk
5th St.	Amvets Dr	O & M Ave.	Compliant	Compliant
5th St.	Buckeye St.	Amvets Dr	Compliant	Compliant
5th St.	Hoosier St.	Summit St.	NC-Spot	NC-Spot
5th St.	O & M Ave.	Hoosier St.	Compliant	Compliant
5th St.	Summit St.	German St.	NC-Spot	NC-Spot
6th St.	Hoosier St.	O & M Ave.	No Sidewalk	No Sidewalk
6th St.	Summit St.	Dead End	NC-Spot	NC-Spot
6th St.	Summit St.	Hoosier St.	Compliant	Compliant
7th St.	Amvets Dr.	Buckeye St.	No Sidewalk	No Sidewalk
7th St.	Hoosier St.	O & M Ave.	No Sidewalk	No Sidewalk
7th St.	Summit St.	Summit St.	NC-Spot	NC-Spot
7th St.	Summit St.	Hoosier St.	NC-Spot	NC-Spot
8th St.	Amvets Dr.	Buckeye St.	No Sidewalk	No Sidewalk

SIDEWALK EVALUATION

STREET NAME	FROM	TO	LEFT SIDEWALK	RIGHT SIDEWALK
8th St.	Hoosier St.	O & M Ave.	No Sidewalk	No Sidewalk
8th St.	Summit St.	German St.	NC-Spot	NC-Spot
8th St.	Summit St.	Hoosier St.	No Sidewalk	No Sidewalk
9th St.	Amvets Dr.	Buckeye St.	No Sidewalk	No Sidewalk
9th St.	Summit St.	Dead End	No Sidewalk	No Sidewalk
Amvets Dr.	10th St.	11th St.	No Sidewalk	No Sidewalk
Amvets Dr.	5th St.	Moir Ave.	No Sidewalk	No Sidewalk
Amvets Dr.	8th St.	9th St.	No Sidewalk	No Sidewalk
Amvets Dr.	9th St.	10th St.	No Sidewalk	No Sidewalk
Amvets Dr.	Moir Ave.	Vernon St.	No Sidewalk	No Sidewalk
Amvets Dr.	Vernon St.	8th St.	No Sidewalk	No Sidewalk
Baker St.	Garden St.	Tiffany Ln.	No Sidewalk	No Sidewalk
Baker St.	Tiffany Ln.	Edgewood Ave.	No Sidewalk	No Sidewalk
Barlow Dr.	Middle School	Dead End	No Sidewalk	No Sidewalk
Base Rd.	Dead End	Shakers Way	No Sidewalk	No Sidewalk
Base Rd.	Norris Ave.	Gum St.	No Sidewalk	No Sidewalk
Base Rd.	Shakers Way	City Limits	No Sidewalk	No Sidewalk
Bay St.	Elm St.	Shull Dr.	No Sidewalk	No Sidewalk
Bay St.	Shull Dr.	Bay St.	No Sidewalk	No Sidewalk
Benny Ln.	Henry St.	Dead End	No Sidewalk	No Sidewalk
Betty Cull Dr.	County Rd. 350	County Rd. 450 N	No Sidewalk	No Sidewalk
Brookside Dr.	Brookside Pl.	Henry St.	No Sidewalk	No Sidewalk
Brookside Pl.	Brookside Dr.	Dead End	No Sidewalk	No Sidewalk
Brookwater Dr.	Westbrook Dr.	Dead End	No Sidewalk	No Sidewalk
Brownstown Rd.	Hayden Pike	Noon Drive West	No Sidewalk	No Sidewalk
Brownstown Rd.	Noon Drive East	Walnut St.	No Sidewalk	No Sidewalk
Brownstown Rd.	Noon Drive	Noon Drive East	No Sidewalk	No Sidewalk

SIDEWALK EVALUATION

STREET NAME	FROM	TO	LEFT SIDEWALK	RIGHT SIDEWALK
Buckeye St.	10th St.	11th St.	Compliant	Compliant
Buckeye St.	8th St.	9th St.	Compliant	Compliant
Buckeye St.	9th St.	10th St.	Compliant	Compliant
Buckeye St.	Flintwood Dr.	Flintwood Dr.	No Sidewalk	No Sidewalk
Buckeye St.	Flintwood Dr.	City Limits	No Sidewalk	No Sidewalk
Buckeye St.	Greensburg St.	Flintwood Dr.	No Sidewalk	No Sidewalk
Buckeye St.	Greensburg St.	11th St.	No Sidewalk	No Sidewalk
Buckeye St.	Madison Ave.	Vernon St.	Compliant	Compliant
Buckeye St.	Vernon St.	8th St.	Compliant	Compliant
Byram Ln.	Long St.	Dead End	No Sidewalk	No Sidewalk
Chestnut St.	Jackson St.	Dead End	No Sidewalk	No Sidewalk
Chestnut St.	Jennings St.	Jackson St.	NC-Spot	NC-Spot
Chestnut St.	US Hwy 3	Jennings St.	Compliant	No Sidewalk
Chestnut St.	US Hwy 3	Elm St.	No Sidewalk	No Sidewalk
Childs Ln.	Long St.	Dead End	No Sidewalk	No Sidewalk
Clearbrook Dr.	Brookside Dr.	Dead End	No Sidewalk	No Sidewalk
College St.	Dead End	Lincoln St.	NC-Spot	NC-Spot
College St.	Jackson St.	Madison Ave.	No Sidewalk	NC-Full
College St.	Jennings St.	Jackson St.	Compliant	Compliant
College St.	Lincoln St.	US Hwy 3	NC-Spot	NC-Spot
College St.	US Hwy 3	Jennings St.	Compliant	Compliant
Commerical Dr.	US Hwy 7	Dead End	No Sidewalk	No Sidewalk
County Rd. 240	US Hwy 7	Dead End	No Sidewalk	No Sidewalk
County Rd. 300	Old SR 3	Dead End	No Sidewalk	No Sidewalk
County Rd. 300	US Hwy 7	Dead End	No Sidewalk	No Sidewalk
County Rd. 350	4th St.	Euler Ct.	No Sidewalk	No Sidewalk
County Rd. 350	City Limits	Old SR 3	No Sidewalk	No Sidewalk

SIDEWALK EVALUATION

STREET NAME	FROM	TO	LEFT SIDEWALK	RIGHT SIDEWALK
County Rd. 350	Euler Ct.	Dead End	No Sidewalk	No Sidewalk
County Rd. 350	Old SR 3	4th St.	No Sidewalk	No Sidewalk
Creastwood Dr.	Hurley Dr.	Dead End	No Sidewalk	No Sidewalk
Curry Dr.	Truman Dr.	4th St.	No Sidewalk	No Sidewalk
Dallas Dr.	Walnut St.	Dead End	No Sidewalk	No Sidewalk
Daniel Dr.	Middle School	Dead End	Compliant	Compliant
David Dr.	Greensburg St.	US Hwy 3	No Sidewalk	No Sidewalk
Davis St.	Gilbert St.	Dead End	No Sidewalk	No Sidewalk
Davis St.	Harms St.	Dead End	No Sidewalk	No Sidewalk
Davis St.	Norris Ave.	Dead End	No Sidewalk	No Sidewalk
Durbin Circle	Durbin St.	Dead End	No Sidewalk	No Sidewalk
Durbin St.	Durbin Circle	Gilbert St.	No Sidewalk	No Sidewalk
Durbin St.	Gilbert St.	Gilbert St.	No Sidewalk	No Sidewalk
Durbin St.	Gilbert St.	Norris Ave.	No Sidewalk	No Sidewalk
Durbin St.	Norris Ave.	Sunnyside Dr.	No Sidewalk	No Sidewalk
Edgewood Ave.	Hayden Pike	Dead End	No Sidewalk	No Sidewalk
Elm St.	Bay St.	Franklin St.	NC-Spot	No Sidewalk
Elm St.	Chestnut St.	College St.	No Sidewalk	No Sidewalk
Elm St.	Franklin St.	Scott St.	NC-Spot	No Sidewalk
Elm St.	Henry St.	Meadow Ln.	Compliant	No Sidewalk
Elm St.	Meadow Ln.	Bay St.	NC-Spot	No Sidewalk
Elm St.	Meloy St.	Lincoln St.	Compliant	Compliant
Elm St.	Park Ave.	Meloy St.	NC-Spot	NC-Spot
Ertel Ln.	4th St.	Dead End	No Sidewalk	No Sidewalk
Euler Ct.	County Rd. 350	Dead End	No Sidewalk	No Sidewalk
FDR Dr.	US Hwy 7	Madison Ave.	No Sidewalk	No Sidewalk
Fewell Ct.	Norris Heights	Dead End	No Sidewalk	No Sidewalk

SIDEWALK EVALUATION

STREET NAME	FROM	TO	LEFT SIDEWALK	RIGHT SIDEWALK
Fifth St.	German St.	City Limits	No Sidewalk	No Sidewalk
Flintwood Dr.	Buckeye St.	Buckeye St.	No Sidewalk	No Sidewalk
Franklin St.	Bay St.	Elm St.	No Sidewalk	No Sidewalk
Garden St.	Hayden Pike	Olive St.	No Sidewalk	No Sidewalk
German St.	4th St.	Fifth St.	No Sidewalk	No Sidewalk
German St.	Longview	8th St.	No Sidewalk	No Sidewalk
German St.	Third St.	4th St.	No Sidewalk	No Sidewalk
Gilbert St.	Durbin St.	Dead End	No Sidewalk	No Sidewalk
Gilbert St.	Durbin St.	Mount St.	No Sidewalk	No Sidewalk
Gilbert St.	South St.	Long St.	No Sidewalk	No Sidewalk
Greensburg St.	David Dr.	Woodlawn Dr.	No Sidewalk	Compliant
Greensburg St.	US Hwy 3	David Dr.	Compliant	Compliant
Greensburg St.	Woodlawn Dr.	Buckeye St.	No Sidewalk	No Sidewalk
Gum St.	Base Rd.	Park View Dr.	No Sidewalk	No Sidewalk
Gum St.	High St.	Hickss St.	No Sidewalk	No Sidewalk
Gum St.	Lincoln Ave.	Myrtle St.	No Sidewalk	Compliant
Gum St.	Main St.	Poplar St.	Compliant	Compliant
Gum St.	Myrtle St.	Walnut St.	No Sidewalk	Compliant
Gum St.	Norris Heights	White St.	No Sidewalk	No Sidewalk
Gum St.	Park View Dr.	Norris Heights	No Sidewalk	No Sidewalk
Gum St.	Poplar St.	High St.	No Sidewalk	No Sidewalk
Gum St.	Walnut St.	Main St.	Compliant	Compliant
Gum St.	White St.	Lincoln Ave.	No Sidewalk	No Sidewalk
Hare Ln.	Jennings St.	Dead End	No Sidewalk	No Sidewalk
Harms St.	Davis St.	Durbin Circle	No Sidewalk	No Sidewalk
Harms St.	Dead End	South St.	No Sidewalk	No Sidewalk
Harms St.	Long St.	Davis St.	No Sidewalk	No Sidewalk

SIDEWALK EVALUATION

STREET NAME	FROM	TO	LEFT SIDEWALK	RIGHT SIDEWALK
Harms St.	Long St.	Long St.	Compliant	No Sidewalk
Harms St.	South St.	Long St.	No Sidewalk	No Sidewalk
Hayden Pike	Brownstown Rd.	Wheeler Ln.	Compliant	No Sidewalk
Hayden Pike	Edgewood Ave.	Stockwell St.	No Sidewalk	Compliant
Hayden Pike	Hicks St.	US Hwy 3	Compliant	NC-Spot
Hayden Pike	Jason Way	Edgewood Ave.	Compliant	No Sidewalk
Hayden Pike	Stockwell St.	Hicks St.	No Sidewalk	Compliant
Hayden Pike	Walnut St.	Brownstown Rd.	Compliant	No Sidewalk
Hayden Pike	Wheeler Ln.	Jason Way	Compliant	No Sidewalk
Henry St.	Benny Ln.	Veterans Dr.	No Sidewalk	Compliant
Henry St.	Brookside Dr.	Benny Ln.	No Sidewalk	Compliant
Henry St.	Elm St.	US Hwy 7	No Sidewalk	Compliant
Henry St.	Veterans Dr.	Elm St.	No Sidewalk	Compliant
Hickory Circle E.	N Manor Ct.	Hurley Dr.	No Sidewalk	No Sidewalk
Hickory Circle	Hurley Dr.	N Manor Ct.	No Sidewalk	No Sidewalk
Hicks St.	Gum St.	Hayden Pike	No Sidewalk	NC-Spot
Hicks St.	Johnson St.	Laurel St.	No Sidewalk	No Sidewalk
Hicks St.	Laurel St.	New St.	No Sidewalk	No Sidewalk
Hicks St.	New St.	Stockwell St.	No Sidewalk	No Sidewalk
Hicks St.	Stockwell St.	Gum St.	No Sidewalk	NC-Spot
Hidden Cove Dr.	US Hwy 7	Dead End	No Sidewalk	No Sidewalk
High St.	Gum St.	US Hwy 3	Compliant	Compliant
High St.	Johnson St.	Laurel St.	No Sidewalk	No Sidewalk
High St.	Laurel St.	Stockwell St.	No Sidewalk	No Sidewalk
High St.	Stockwell St.	Gum St.	Compliant	No Sidewalk
High St.	US Hwy 3	Jennings St.	Compliant	Compliant
Hoosier St.	1st St.	2nd St.	Compliant	Compliant

SIDEWALK EVALUATION

STREET NAME	FROM	TO	LEFT SIDEWALK	RIGHT SIDEWALK
Hoosier St.	2nd St.	3rd St.	Compliant	Compliant
Hoosier St.	3rd St.	Madison St.	Compliant	Compliant
Hoosier St.	4th St.	5th St.	Compliant	Compliant
Hoosier St.	5th St.	6th St.	Compliant	Compliant
Hoosier St.	6th St.	7th St.	Compliant	Compliant
Hoosier St.	7th St.	8th St.	NC-Spot	NC-Spot
Hoosier St.	8th St.	9th St.	NC-Spot	NC-Spot
Hoosier St.	9th St.	Dead End	Compliant	No Sidewalk
Hoosier St.	Madison St.	4th St.	No Sidewalk	No Sidewalk
Hoosier St.	Washington St.	1st St.	Compliant	Compliant
Hurley Dr.	Crestwood Dr.	Hickory Circle E.	No Sidewalk	No Sidewalk
Hurley Dr.	Hickory Circle E.	N Manor Ct.	No Sidewalk	No Sidewalk
Hurley Dr.	Hickory Circle	Dead End	No Sidewalk	No Sidewalk
Hurley Dr.	N Manor Ct.	Hickory Circle W.	No Sidewalk	No Sidewalk
Hurley Dr.	US Hwy 7	Veterans Dr.	No Sidewalk	No Sidewalk
Hurley Dr.	Veterans Dr.	Crestwood Dr.	No Sidewalk	No Sidewalk
Industrial Dr.	Madison Ave.	Truman Dr.	No Sidewalk	No Sidewalk
Jackson St.	Chestnut St.	College St.	Compliant	Compliant
Jackson St.	College St.	Vernon St.	Compliant	Compliant
Jackson St.	Main St.	Walnut St.	No Sidewalk	No Sidewalk
Jackson St.	Poplar St.	Main St.	Compliant	Compliant
Jackson St.	Walnut St.	Chestnut St.	Compliant	Compliant
Jason Way	Baker St.	Olive St.	No Sidewalk	No Sidewalk
Jason Way	Hayden Pike	Baker St.	No Sidewalk	No Sidewalk
Jennings St.	Chestnut St.	College St.	Compliant	Compliant
Jennings St.	College St.	Vernon St.	Compliant	Compliant
Jennings St.	Hare Ln.	Webster St.	Compliant	Compliant

SIDEWALK EVALUATION

STREET NAME	FROM	TO	LEFT SIDEWALK	RIGHT SIDEWALK
Jennings St.	High St.	Poplar St.	No Sidewalk	No Sidewalk
Jennings St.	Jefferson St.	Hare Ln.	Compliant	Compliant
Jennings St.	Main St.	Walnut St.	No Sidewalk	No Sidewalk
Jennings St.	Maple St.	Jefferson St.	Compliant	Compliant
Jennings St.	Poplar St.	Main St.	No Sidewalk	No Sidewalk
Jennings St.	Vernon St.	Maple St.	Compliant	Compliant
Jennings St.	Walnut St.	Chestnut St.	Compliant	Compliant
JFK Dr.	4th St.	Old SR 3	No Sidewalk	No Sidewalk
Johnson St.	Hicks St.	High St.	No Sidewalk	No Sidewalk
Laurel St.	Hicks St.	High St.	No Sidewalk	No Sidewalk
Lincoln Ave.	Dead End	Sunnyside Ct.	No Sidewalk	No Sidewalk
Lincoln St.	College St.	Margaret St.	Compliant	Compliant
Lincoln St.	Gum St.	College St.	Compliant	Compliant
Lincoln St.	Margaret St.	Elm St.	Compliant	Compliant
Locust St.	Old SR 3	Dead End	No Sidewalk	No Sidewalk
Long St.	Bryam Ln.	Childs Ln.	No Sidewalk	Compliant
Long St.	Childs Ln.	Westwood Pl.	No Sidewalk	Compliant
Long St.	Harms St.	Bryam Ln.	No Sidewalk	Compliant
Long St.	Harms St.	Norris Ave.	No Sidewalk	Compliant
Long St.	Harms St.	Byram Ln.	No Sidewalk	Compliant
Long St.	Westwood Pl.	Dead End	No Sidewalk	No Sidewalk
Longview	German St.	Dead End	No Sidewalk	No Sidewalk
Longview	Summit St.	German St.	No Sidewalk	No Sidewalk
Madison Ave.	FDR Dr.	Steelway St.	No Sidewalk	No Sidewalk
Madison Ave.	Hoosier St.	O & M Ave.	No Sidewalk	Compliant
Madison Ave.	Industrial Dr.	FDR Dr.	No Sidewalk	No Sidewalk
Madison Ave.	Main St.	Walnut St.	Compliant	Compliant

SIDEWALK EVALUATION

STREET NAME	FROM	TO	LEFT SIDEWALK	RIGHT SIDEWALK
Madison Ave.	O & M Ave.	Main St.	Compliant	Compliant
Madison Ave.	Old SR 3	Rodgers Park Dr.	Compliant	No Sidewalk
Madison Ave.	Rodgers Park Dr.	Industiral Dr.	No Sidewalk	No Sidewalk
Madison Ave.	Terrace Ct.	Dead End	No Sidewalk	No Sidewalk
Madison Ave.	Vernon St.	Terrace Ct.	No Sidewalk	No Sidewalk
Main St.	Gum St.	US Hwy 3	Compliant	Compliant
Main St.	Jackson St.	Madison St.	Compliant	Compliant
Main St.	Jennings St.	Jackson St.	Compliant	No Sidewalk
Main St.	US Hwy 3	Jennings St.	Compliant	Compliant
Margaret St.	Meloy St.	Lincoln St.	No Sidewalk	No Sidewalk
Meadow Ln.	Elm St.	Dead End	No Sidewalk	No Sidewalk
Meloy St.	Elm St.	US Hwy 7	No Sidewalk	No Sidewalk
Meloy St.	Margaret St.	Elm St.	No Sidewalk	No Sidewalk
Meloy St.	Pleasant St.	Margaret St.	No Sidewalk	No Sidewalk
Meloy St.	Shadeland Ave.	Pleasant St.	No Sidewalk	No Sidewalk
Middle School	Barlow Dr.	Persimmon Trail	No Sidewalk	Compliant
Middle School	Daniel Dr.	Barlow Dr.	No Sidewalk	Compliant
Middle School	Persimmon Trail	Dead End	No Sidewalk	Compliant
Middle School	Walnut St.	Daniel Dr.	No Sidewalk	No Sidewalk
Monroe St.	White St.	Dead End	No Sidewalk	No Sidewalk
Montrow Pkwy	County Rd. 350	4th St.	No Sidewalk	No Sidewalk
Mount St.	Dead End	Norris Ave.	No Sidewalk	No Sidewalk
Myrtle St.	Dead End	Oakwood St.	NC-Spot	NC-Spot
Myrtle St.	Oakwood St.	Gum St.	NC-Spot	NC-Spot
N Manor Ct.	Hickory Circle	Hurley Dr.	No Sidewalk	No Sidewalk
New St.	Stockwell St.	Hicks St.	No Sidewalk	No Sidewalk
Noon Drive E.	Brownstown Rd.	Noon Drive W.	No Sidewalk	No Sidewalk

SIDEWALK EVALUATION

STREET NAME	FROM	TO	LEFT SIDEWALK	RIGHT SIDEWALK
Noon Drive W.	Brownstown Rd.	Noon Drive E.	No Sidewalk	No Sidewalk
Norris Ave.	Base Rd.	Norris Heights	No Sidewalk	NC-Spot
Norris Ave.	Base Rd.	Gum St.	NC-Spot	No Sidewalk
Norris Ave.	Davis St.	Durbin St.	No Sidewalk	NC-Spot
Norris Ave.	Durbin St.	Mount St.	NC-Spot	NC-Spot
Norris Ave.	Long St.	Davis St.	NC-Spot	NC-Spot
Norris Ave.	Mount St.	Platter Dr.	NC-Spot	NC-Spot
Norris Ave.	Norris Heights	South St.	No Sidewalk	NC-Spot
Norris Ave.	Norris Heights	Base Rd.	NC-Spot	No Sidewalk
Norris Ave.	Platter Dr.	Walnut St.	Compliant	Compliant
Norris Ave.	South St.	White St.	NC-Spot	No Sidewalk
Norris Ave.	White St.	Durbin St.	NC-Spot	NC-Spot
Norris Ave.	White St.	Long St.	No Sidewalk	NC-Spot
Norris Heights	Fewell Ct.	Gum St.	No Sidewalk	No Sidewalk
Norris Heights	Norris Ave.	Fewell Ct.	No Sidewalk	No Sidewalk
O & M Ave.	1st St.	2nd St.	Compliant	No Sidewalk
O & M Ave.	2nd St.	3rd St.	Compliant	No Sidewalk
O & M Ave.	3rd St.	4th St.	Compliant	No Sidewalk
O & M Ave.	4th St.	5th St.	Compliant	No Sidewalk
O & M Ave.	5th St.	6th St.	Compliant	No Sidewalk
O & M Ave.	6th St.	7th St.	Compliant	No Sidewalk
O & M Ave.	7th St.	8th St.	Compliant	No Sidewalk
O & M Ave.	8th St.	9th St.	Compliant	No Sidewalk
O & M Ave.	9th St.	City Limits	No Sidewalk	No Sidewalk
O & M Ave.	Dead End	1st St.	No Sidewalk	No Sidewalk
O & M Ave.	US Hwy 3	City Limits	No Sidewalk	No Sidewalk
Oak Ct.	Oakridge Dr.	Dead End	No Sidewalk	No Sidewalk

SIDEWALK EVALUATION

STREET NAME	FROM	TO	LEFT SIDEWALK	RIGHT SIDEWALK
Oak Ct.	Oakridge Dr.	Dead End	No Sidewalk	No Sidewalk
Oak Meadow	Walnut St.	Dead End	Compliant	Compliant
Oakridge Dr.	South St.	Oak Ct.	No Sidewalk	No Sidewalk
Oakridge Dr.	Woodside Dr.	Oak Ct.	No Sidewalk	No Sidewalk
Oakwood St.	Platter Dr.	Myrtle St.	No Sidewalk	No Sidewalk
Oakwood St.	Walnut St.	Platter Dr.	No Sidewalk	No Sidewalk
Old SR 3	County Rd. 300	JFK Dr.	No Sidewalk	No Sidewalk
Old SR 3	County Rd. 350	US Hwy 50	No Sidewalk	No Sidewalk
Old SR 3	JFK Dr.	Locust St.	No Sidewalk	No Sidewalk
Old SR 3	Locust St.	Madison Ave.	No Sidewalk	No Sidewalk
Old SR 3	Madison St.	US Hwy 7	No Sidewalk	No Sidewalk
Old SR 3	Us Hwy 50	County Rd. 300 N.	No Sidewalk	No Sidewalk
Olive St.	Tiffany Ln.	Garden St.	No Sidewalk	No Sidewalk
Park Ave.	Dead End	Spring Heights Dr.	No Sidewalk	No Sidewalk
Park Ave.	Elm St.	US Hwy 7	No Sidewalk	No Sidewalk
Park Ave.	Shadeland Ave.	Elm St.	No Sidewalk	No Sidewalk
Park Ave.	Spring Heights	Shadeland Ave.	No Sidewalk	No Sidewalk
Parkview Dr.	Gum St.	Dead End	No Sidewalk	No Sidewalk
Persimmon Trail	Middle School	Steward St.	No Sidewalk	No Sidewalk
Persimmon Trail	Steward St.	Dead End	No Sidewalk	No Sidewalk
Pinebrook Ct.	Brookside Dr.	Dead End	No Sidewalk	No Sidewalk
Platter Dr.	Dead End	Norris Ave.	No Sidewalk	No Sidewalk
Platter Dr.	Norris Ave.	Oakwood St.	No Sidewalk	No Sidewalk
Pleasant St.	Dead End	Meloy St.	No Sidewalk	No Sidewalk
Poplar St.	Gum St.	SR 3	Compliant	Compliant
Poplar St.	Jennings St.	Jackson St.	No Sidewalk	Compliant
Poplar St.	Stockwell St.	Gum St.	Compliant	Compliant

SIDEWALK EVALUATION

STREET NAME	FROM	TO	LEFT SIDEWALK	RIGHT SIDEWALK
Poplar St.	US Hwy 3	Jennings St.	Compliant	Compliant
Poplar St.	Walnut St.	Stockwell St.	NC-Spot	NC-Spot
Rodger Ln.	Dead End	David Dr.	No Sidewalk	No Sidewalk
Rodgers Park Dr.	Madison Ave.	Dead End	No Sidewalk	No Sidewalk
Sandybrook Dr.	Brookside Dr.	Vintage Trace	No Sidewalk	No Sidewalk
Sandybrook Dr.	Dead End	Brookside Dr.	No Sidewalk	No Sidewalk
Sandybrook Dr.	Vintage Trace	Dead End	No Sidewalk	No Sidewalk
Scott St.	Elm St.	US Hwy 3	Compliant	No Sidewalk
Scott St.	Pierce St.	Clay St.	No Sidewalk	No Sidewalk
Scott St.	US Hwy 3	Pierce St.	NC-Full	No Sidewalk
Shadeland Ave.	Jacqueline Blvd.	Meloy St.	No Sidewalk	No Sidewalk
Shadeland Ave.	Park Ave.	Jacqueline Blvd.	No Sidewalk	No Sidewalk
Shady Ln.	Woodlawn Dr.	Dead End	No Sidewalk	No Sidewalk
Shakers Way	Base Rd.	Dead End	Compliant	No Sidewalk
Showers Dr.	Dead End	Walnut St.	Compliant	No Sidewalk
Shull Dr.	Bay St.	Bay St.	No Sidewalk	No Sidewalk
South St.	Gilbert St.	Harms St.	No Sidewalk	No Sidewalk
South St.	Gilbert St.	Norris Ave.	No Sidewalk	No Sidewalk
South St.	Harms St.	Woodside Dr.	No Sidewalk	No Sidewalk
South St.	Harms St.	Gilbert St.	No Sidewalk	No Sidewalk
South St.	Norris Ave.	Gilbert St.	No Sidewalk	No Sidewalk
South St.	Woodside Dr.	Oakridge Dr.	No Sidewalk	No Sidewalk
South St.	Woodside Dr.	Harms St.	No Sidewalk	No Sidewalk
Spring Heights	Park Ave.	Dead End	No Sidewalk	No Sidewalk
Steward St.	Persimmon Trail	Dead End	No Sidewalk	No Sidewalk
Stockwell St.	Hayden Pike	New St.	No Sidewalk	No Sidewalk
Stockwell St.	Hicks St.	High St.	No Sidewalk	No Sidewalk

SIDEWALK EVALUATION

STREET NAME	FROM	TO	LEFT SIDEWALK	RIGHT SIDEWALK
Stockwell St.	High St.	Poplar St.	No Sidewalk	No Sidewalk
Stockwell St.	New St.	Hicks St.	No Sidewalk	NC-Full
Summit St.	2nd St.	3rd St.	No Sidewalk	No Sidewalk
Summit St.	3rd St.	4th St.	No Sidewalk	No Sidewalk
Summit St.	4th St.	5th St.	Compliant	No Sidewalk
Summit St.	5th St.	6th St.	No Sidewalk	Compliant
Summit St.	6th St.	7th St.	No Sidewalk	Compliant
Summit St.	7th St.	8th St.	Compliant	No Sidewalk
Summit St.	8th St.	Longview Terrace	No Sidewalk	Compliant
Summit St.	9th St.	City Limits	No Sidewalk	No Sidewalk
Summit St.	Longview	9th St.	No Sidewalk	Compliant
Sunnyside Ct.	Lincoln Ave.	Thomas St	No Sidewalk	No Sidewalk
Sunnyside Ct.	Norris Ave.	Sunnyside Dr.	No Sidewalk	No Sidewalk
Sunnyside Ct.	Sunnyside Dr.	Lincoln Ave.	No Sidewalk	No Sidewalk
Sunnyside Ct.	Thomas St.	Gum St.	No Sidewalk	No Sidewalk
Sunnyside Dr.	Durbin St.	Lincoln Ave.	No Sidewalk	No Sidewalk
Sunnyside Dr.	White St.	Durbin St.	No Sidewalk	No Sidewalk
Sunnyside Dr.	White St.	Dead End	No Sidewalk	No Sidewalk
Terrace Ct.	Madison St.	Dead End	No Sidewalk	No Sidewalk
Thomas St.	Dead End	Sunnyside Court	No Sidewalk	No Sidewalk
Tiffany Ln.	Baker St.	Olive St.	No Sidewalk	No Sidewalk
Totten Circle	Totten Ct.	Dead End	No Sidewalk	No Sidewalk
Totten Circle	US Hwy 7	Totten Ct.	No Sidewalk	No Sidewalk
Totten Ct.	Totten Circle	Dead End	No Sidewalk	No Sidewalk
Trueman Dr.	Industrial Dr.	Dead End	No Sidewalk	No Sidewalk
Twin Oaks Dr.	Wheeler Ln.	Dead End	No Sidewalk	No Sidewalk
Vernon St.	Jackson St.	Madison Ave.	No Sidewalk	No Sidewalk

SIDEWALK EVALUATION

STREET NAME	FROM	TO	LEFT SIDEWALK	RIGHT SIDEWALK
Vernon St.	Jennings St.	Jackson St.	No Sidewalk	No Sidewalk
Vernon St.	Madison Ave.	Buckeye St.	No Sidewalk	No Sidewalk
Vernon St.	US Hwy 3	Jennings St.	No Sidewalk	No Sidewalk
Veterans Dr.	Hurley Dr.	Henry St.	No Sidewalk	No Sidewalk
Vintage Trace	Sandybrook Dr.	Dead End	No Sidewalk	No Sidewalk
Walnut St.	City Limits	Middle School Rd.	No Sidewalk	No Sidewalk
Walnut St.	Dallas Dr.	Oak Meadow Dr.	Compliant	No Sidewalk
Walnut St.	Gum St.	US Hwy 3	Compliant	Compliant
Walnut St.	Hyden Pike	Noon Drive E.	No Sidewalk	No Sidewalk
Walnut St.	Jackson St.	Madison St.	Compliant	Compliant
Walnut St.	Jennings St.	Jackson St.	Compliant	Compliant
Walnut St.	Madison St.	Fifth St.	Compliant	Compliant
Walnut St.	Middle School	Hyden Pike	No Sidewalk	No Sidewalk
Walnut St.	Noon Drive E.	Dallas Dr.	Compliant	No Sidewalk
Walnut St.	Norris St.	Oakwood St.	Compliant	Compliant
Walnut St.	Oak Meadow	Poplar St.	No Sidewalk	NC-Spot
Walnut St.	Oakwood St.	Gum St.	Compliant	Compliant
Walnut St.	Poplar St.	Norris St.	Compliant	No Sidewalk
Walnut St.	US Hwy 3	Jennings St.	Compliant	Compliant
Webster St.	US Hwy 3	Jennings St.	Compliant	Compliant
Westbrook Dr.	Brookwater Dr.	Dead End	No Sidewalk	No Sidewalk
Westwood Pl.	Long St.	Dead End	No Sidewalk	No Sidewalk
Wheeler Ln.	Hayden Pike	Twin Oaks Dr.	No Sidewalk	No Sidewalk
Wheeler Ln.	Twin Oaks Dr.	Dead End	No Sidewalk	No Sidewalk
White St.	Monroe St.	Gum St.	No Sidewalk	No Sidewalk
White St.	Norris Ave.	Sunnyside Dr.	No Sidewalk	No Sidewalk
White St.	Sunnyside Dr.	Monroe St.	No Sidewalk	No Sidewalk

CURB RAMP EVALUATION

STREET INTERSECTION	NW CORNER	NE CORNER	SW CORNER	SE CORNER
4th St. and German St.	Compliant	No Curb Ramp	No Curb Ramp	No Curb Ramp
4th St. and Hoosier St.	NC-Nav	NC-Nav	NC-Nav	NC-Nav
4th St. and O & M Ave.	Compliant	Compliant	Compliant	Compliant
4th St. and Summit St.	Compliant	No Curb Ramp	No Curb Ramp	Compliant
5th St. and Amvets Dr.	No Curb Ramp	Compliant	No Curb Ramp	Compliant
5th St. and German St.	NC-Nav	No Curb Ramp	NC-Nav	No Curb Ramp
5th St. and Hoosier Ave.	Compliant	Compliant	Compliant	Compliant
5th St. and O & M Ave.	Compliant	Compliant	Compliant	Compliant
5th St. and Summit St.	NC-Nav	NC-Nav	NC-Nav	NC-Nav
6th St. and Hoosier St.	Compliant	Compliant	Compliant	Compliant
7th St. and Summit St.	Compliant	Compliant	Compliant	Compliant
Buckeye St. and 10th St.	Compliant	Compliant	No Curb Ramp	No Curb Ramp
Buckeye St. and 9th St.	Compliant	Compliant	No Curb Ramp	No Curb Ramp
Buckeye St. and 9th St.	Compliant	Compliant	No Curb Ramp	No Curb Ramp
Buckeye St. and Madison Ave.	Compliant	Compliant	Compliant	Compliant
Buckeye St. and Vernon St.	Compliant	Compliant	Compliant	Compliant
Buckeye St. and 11th St.	Compliant	Compliant	No Curb Ramp	No Curb Ramp
College St. and US Hwy 3	Compliant	No Curb Ramp	Compliant	No Curb Ramp
Dallas Dr. and Walnut St.	Compliant	Compliant	NC-Nav	NC-Nav
Elm St. and Bay St.	NC-Nav	NC-Nav	No Curb Ramp	No Curb Ramp
Elm St. and Franklin St.	NC-Nav	NC-Nav	No Curb Ramp	No Curb Ramp
Elm St. and Lincoln St.	NC-Nav	NC-Nav	No Curb Ramp	No Curb Ramp
Elm St. and Meloy St.	Compliant	Compliant	Compliant	Compliant
Elm St. and Park Ave.	No Curb Ramp	No Curb Ramp	NC-Nav	NC-Nav
Elm St. and Scott St.	NC-Nav	NC-Nav	No Curb Ramp	No Curb Ramp
Greensburg St. and David Dr.	No Curb Ramp	Compliant	No Curb Ramp	Compliant
Greensburg St. and US Hwy 3	Compliant	No Curb Ramp	Compliant	No Curb Ramp

CURB RAMP EVALUATION

STREET INTERSECTION	NW CORNER	NE CORNER	SW CORNER	SE CORNER
College St. and US Hwy 3	No Curb Ramp	Compliant	No Curb Ramp	Compliant
Gum St. and Lincoln St.	No Curb Ramp	Compliant	No Curb Ramp	Compliant
Gum St. and Lincoln St.	No Curb Ramp	Compliant	No Curb Ramp	Compliant
Gum St. and Main St.	No Curb Ramp	Compliant	No Curb Ramp	Compliant
Gum St. and Poplar St.	Compliant	Compliant	Compliant	Compliant
Hayden Pike and Brownstown Rd.	Compliant	No Curb Ramp	Compliant	Compliant
Hayden Pike and Edgewood Ave.	No Curb Ramp	No Curb Ramp	Compliant	Compliant
Hayden Pike and Hicks St.	No Curb Ramp	No Curb Ramp	Compliant	Compliant
Hayden Pike and US Hwy 3	No Curb Ramp	No Curb Ramp	Compliant	Compliant
Hayden Pike and Wheeler Ln.	Compliant	Compliant	No Curb Ramp	No Curb Ramp
Hayden Pike and Stockwell St.	No Curb Ramp	No Curb Ramp	Compliant	Compliant
Henry St. and Brookside Dr.	No Curb Ramp	No Curb Ramp	No Curb Ramp	Compliant
Henry St. and Elm St.	No Curb Ramp	No Curb Ramp	NC-Nav	NC-Nav
High St. and Gum St.	NC-Non-Nav	NC-Non-Nav	No Curb Ramp	No Curb Ramp
High St. and Stockwell St.	NC-Non-Nav	NC-Non-Nav	NC-Non-Nav	NC-Non-Nav
High St. and US Hwy 3	No Curb Ramp	No Curb Ramp	Compliant	Compliant
Hoosier St. and 1st St.	No Curb Ramp	No Curb Ramp	Compliant	Compliant
Hoosier St. and 2nd St.	Compliant	Compliant	Compliant	Compliant
Hoosier St. and 3rd St.	No Curb Ramp	No Curb Ramp	Compliant	Compliant
Hoosier St. and 8th St.	NC-Nav	NC-Nav	NC-Nav	NC-Nav
Hoosier St. and 9th St.	Compliant	Compliant	Compliant	No Curb Ramp
Hoosier St. and Madison St.	Compliant	Compliant	Compliant	Compliant
Hoosier St. and Washington St.	Compliant	Compliant	Compliant	Compliant
Hoosier St. and 7th St.	NC-Nav	NC-Nav	NC-Nav	NC-Nav
Jackson St. and Chestnut St.	Compliant	Compliant	Compliant	Compliant
Jackson St. and College St.	Compliant	Compliant	Compliant	Compliant
Jackson St. and Vernon St.	No Curb Ramp	Compliant	No Curb Ramp	Compliant

CURB RAMP EVALUATION

STREET INTERSECTION	NW CORNER	NE CORNER	SW CORNER	SE CORNER
Jennings St. and Chestnut St.	Compliant	Compliant	Compliant	Compliant
Jennings St. and College St.	Compliant	Compliant	Compliant	Compliant
Jennings St. and Hare Ln.	Compliant	Compliant	No Curb Ramp	No Curb Ramp
Jennings St. and Jefferson St.	No Curb Ramp	No Curb Ramp	Compliant	Compliant
Jennings St. and Maple St.	No Curb Ramp	No Curb Ramp	Compliant	Compliant
Jennings St. and Vernon St.	Compliant	Compliant	Compliant	Compliant
Jennings St. and Webster St.	No Curb Ramp	No Curb Ramp	Compliant	No Curb Ramp
Lincoln Ave. and College St.	Compliant	Compliant	Compliant	Compliant
Lincoln Ave. and Margaret St.	No Curb Ramp	NC-Nav	No Curb Ramp	NC-Nav
Long St. and Byram Ln.	Compliant	Compliant	No Curb Ramp	No Curb Ramp
Long St. and Harms St.	No Curb Ramp	NC-Nav	No Curb Ramp	No Curb Ramp
Long St. and Westwood Pl.	Compliant	Compliant	No Curb Ramp	No Curb Ramp
Main St. and Jackson St.	Compliant	Compliant	Compliant	Compliant
Main St. and Jennings St.	Compliant	Compliant	Compliant	Compliant
Main St. and Madison St.	Compliant	Compliant	Compliant	Compliant
Main St. and US Hwy 3	Compliant	Compliant	Compliant	Compliant
Norris Ave. and Davis St.	Compliant	No Curb Ramp	Compliant	No Curb Ramp
Norris Ave. and Durbin St.	NC-Nav	NC-Nav	NC-Nav	NC-Nav
Norris Ave. and Long St.	Compliant	No Curb Ramp	Compliant	No Curb Ramp
Norris Ave. and Mount St.	NC-Nav	NC-Nav	NC-Nav	NC-Nav
Norris Ave. and Norris Heights	No Curb Ramp	Compliant	No Curb Ramp	Compliant
Norris Ave. and Platter Dr. St.	NC-Nav	NC-Nav	NC-Nav	NC-Nav
Norris Ave. and South St.	No Curb Ramp	No Curb Ramp	No Curb Ramp	No Curb Ramp
Norris Ave. and Walnut St.	Compliant	Compliant	Compliant	Compliant
Norris Ave. and White St.	Compliant	Compliant	Compliant	Compliant
O & M Ave. and 1st St.	Compliant	Compliant	No Curb Ramp	No Curb Ramp
O & M Ave. and 2nd St.	Compliant	Compliant	No Curb Ramp	No Curb Ramp

CURB RAMP EVALUATION

STREET INTERSECTION	NW CORNER	NE CORNER	SW CORNER	SE CORNER
O & M Ave. and 3rd St.	Compliant	Compliant	No Curb Ramp	No Curb Ramp
O & M Ave. and 6th St.	Compliant	Compliant	No Curb Ramp	No Curb Ramp
O & M Ave. and 7th St.	Compliant	Compliant	No Curb Ramp	No Curb Ramp
O & M Ave. and 8th St.	Compliant	Compliant	No Curb Ramp	No Curb Ramp
O & M Ave. and 9th St.	Compliant	Compliant	No Curb Ramp	No Curb Ramp
Pierce St. and Franklin St.	Compliant	Compliant	Compliant	Compliant
Poplar St. and Jackson St.	No Curb Ramp	No Curb Ramp	No Curb Ramp	NC-Nav
Poplar St. and Jennings St.	NC-Nav	NC-Nav	NC-Nav	NC-Nav
Poplar St. and US Hwy 3	Compliant	Compliant	Compliant	Compliant
Scott St. and Pierce St.	Compliant	Compliant	Compliant	Compliant
Scott St. and US Hwy 3	Compliant	Compliant	Compliant	Compliant
Summit St. and 6th St.	Compliant	Compliant	Compliant	Compliant
Summit St. and 7th St.	NC-Non-Nav	No Curb Ramp	No Curb Ramp	No Curb Ramp
Summit St. and 8th St.	Compliant	Compliant	Compliant	Compliant
Summit St. and 9th St.	No Curb Ramp	No Curb Ramp	Compliant	No Curb Ramp
Summit St. and Longview Terrace	No Curb Ramp	No Curb Ramp	No Curb Ramp	No Curb Ramp
Walnut and Jackson St.	Compliant	Compliant	Compliant	Compliant
Walnut St. and Dallas Dr.	No Curb Ramp	No Curb Ramp	NC-Nav	NC-Nav
Walnut St. and Gum St.	Compliant	Compliant	Compliant	NC-Nav
Walnut St. and Jennings St.	Compliant	Compliant	Compliant	Compliant
Walnut St. and Madison St.	Compliant	Compliant	Compliant	Compliant
Walnut St. and Norris Ave.	No Curb Ramp	No Curb Ramp	Compliant	Compliant
Walnut St. and Oak Meadow Dr.	NC-Nav	NC-Nav	No Curb Ramp	No Curb Ramp
Walnut St. and Oakwood St.	No Curb Ramp	No Curb Ramp	NC-Nav	NC-Nav
Walnut St. and Poplar St.	NC-Nav	NC-Nav	No Curb Ramp	No Curb Ramp
Walnut St. and Showers Dr.	No Curb Ramp	No Curb Ramp	NC-Nav	NC-Nav
Walnut St. and Showers Dr.	Compliant	Compliant	Compliant	Compliant

DRAFT